

# HBF TEXTILES



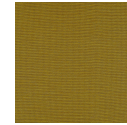
## Beetle

945-55 Longhorn

\$59.00/yard



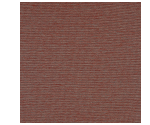
945-18 - Rhino



945-22 -  
Tortoise



945-37 - Bark



945-40 -  
Ladybug



945-41 - Stag



945-45 - Clown



945-55 -  
Longhorn



945-58 - Jewel



945-67 -  
Emerald



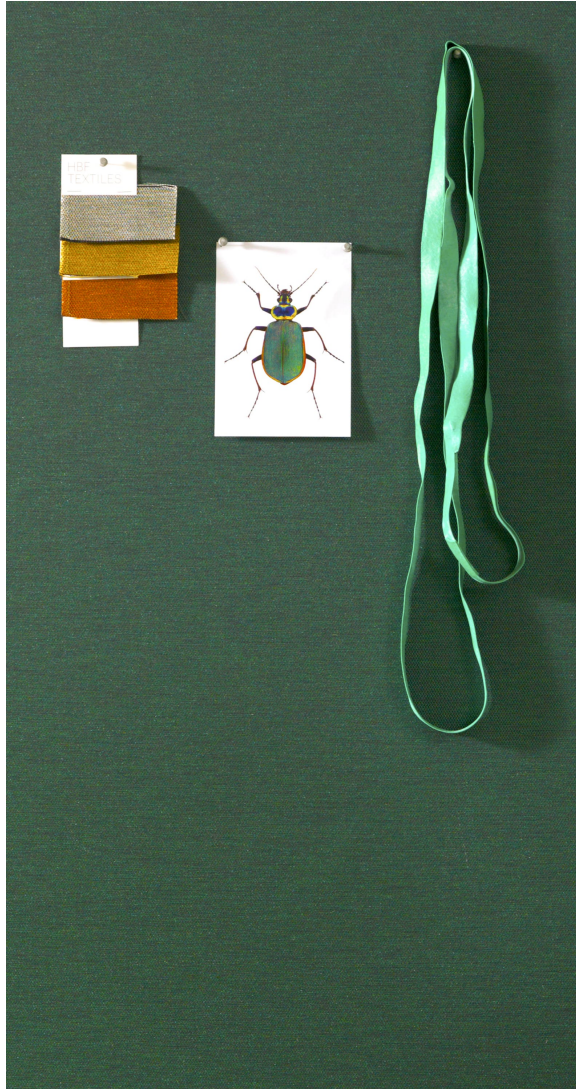
945-88 - Rice



945-89 - Patent

<b>DESIGNER</b>	Elodie Blanchard
<b>APPLICATION</b>	Upholstery, wrapped panel, systems panel
<b>CONTENT</b>	81% polyester, 19% polyacrylic
<b>WIDTH</b>	56"
<b>REPEAT</b>	None
<b>WEIGHT</b>	16.24 ounces per linear yard
<b>FINISH</b>	None
<b>BACKING</b>	None
<b>ABRASION</b>	80,000 double rubs (W)
<b>ORIGIN</b>	Germany
<b>FLAME RESISTANCE</b>	California TB 117-2013 Section 1 (Pass), Class A rated ASTM E-84 (unadhered)
<b>MAINTENANCE</b>	<p>WS: Clean with upholstery shampoo or mild dry cleaning solvent.</p> <p>Bleach solutions up to 10% for cleaning difficult stains.</p>






---

**SUSTAINABILITY**

Third party certified, SCS Indoor Advantage™ Gold.

Meets BIFMA e3 credit 7.4.4 for Targeted Chemical Elimination which includes PFAS restrictions.

Based on disclosure from the supplier this product does not contain harmful chemicals listed on the Red List.

Free of intentionally added PFAS chemicals.

---

**NOTES**

Bleach cleanable. Meets BIFMA 8.1 2019 Healthcare Furniture Design Guidelines - Grade 5.

---

**PRICE | GRADE**

\$59.00 | HBF Grade G

---

**ACT REGISTERED CERTIFICATION**



---

**PRICE LIST**

[Go to price list](#)

---

**DOWNLOAD**

[Fabric Product Documents](#)  
[Maintenance](#)  
[Sustainability Statement](#)  
[Sustainability Certification Summary](#)  
[Indoor Advantage™ Certificate](#)  
[Sustainable Contents](#)  
[Performance Textiles](#)  
[Cleaning & Disinfection Against COVID-19](#)

---

**OTHER**

[Other](#)  
[Media Kit](#)  
[News & Events](#)  
[Presentation](#)  
[PFAS - FAQ](#)  
[BIFMA 8.1 2019 Healthcare Furniture Design Guidelines](#)



