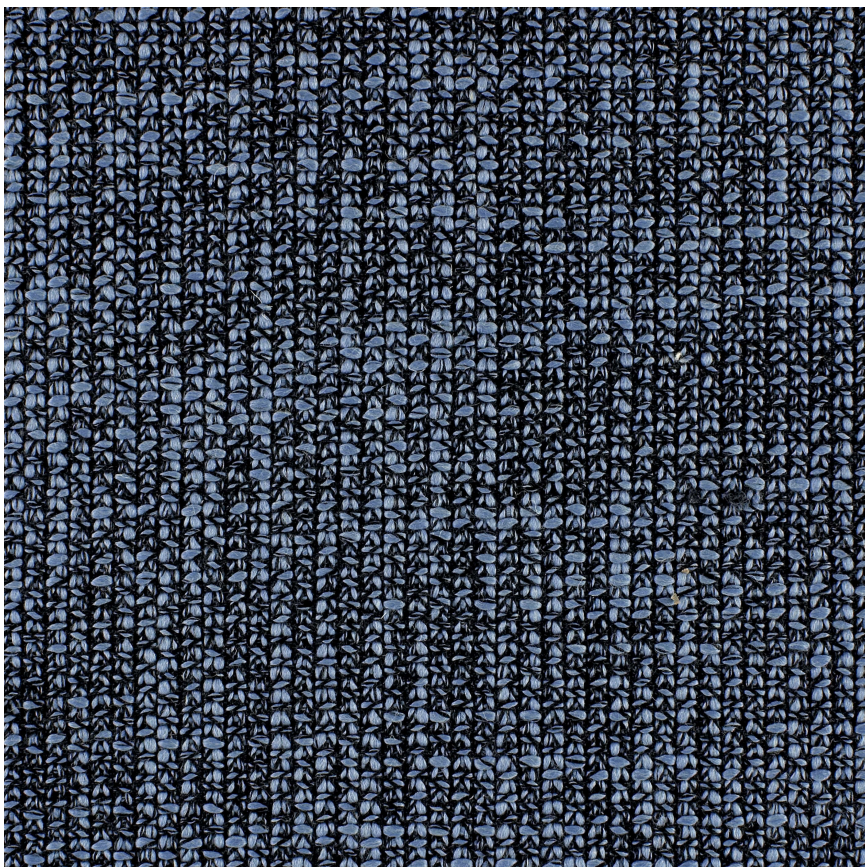


HBF TEXTILES



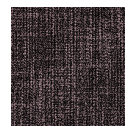
Cherished Knit

954-58 Blue Elderberry

\$87.00/yard



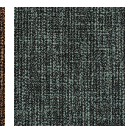
954-31 -
Hazelnut



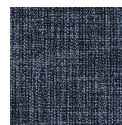
954-40 -
Lychee



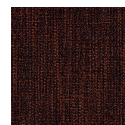
954-46 -
Rosehip



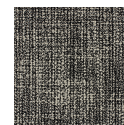
954-56 -
Juniper



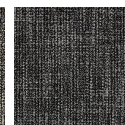
954-58 - Blue
Elderberry



954-74 - Ancho
Chili

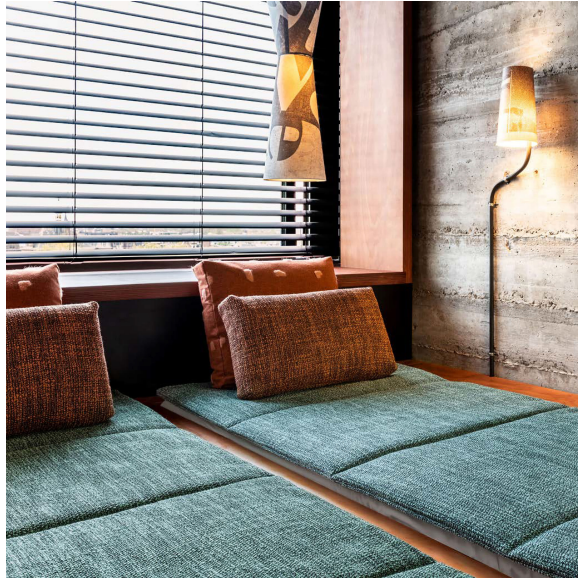


954-81 -
Oyster



954-90 - Black
Truffle

DESIGNER	Christiane Müller
APPLICATION	Upholstery
CONTENT	56% acrylic, 26% cotton, 15% wool, 3% polyester
WIDTH	54"
REPEAT	None
WEIGHT	31.60 ounces per linear yard
FINISH	This pattern is available with a non-PFAS water repellent finish. Colorways - 31 Hazelnut, 40 Lychee, and 90 Black Truffle are available with a PFAS performance stain resistant coating, for a limited time only.
BACKING	None
ABRASION	65,000 cycles (M)
ORIGIN	Italy
FLAME RESISTANCE	California TB 117-2013 Section 1 (Pass)
MAINTENANCE	S: Clean with water free dry cleaning solvent.





SUSTAINABILITY

41% rapidly renewable content.

Third party certified, Indoor Advantage™ Gold.

Based on disclosure from the supplier this product does not contain harmful chemicals listed on the Red List.

NOTES

This pattern is available with a non-PFAS water repellent finish.

Colorways - 31 Hazelnut, 40 Lychee, and 90 Black Truffle are available with a PFAS performance stain resistant coating, for a limited time only.

Please contact Client Experience –
 hbftextilesservice@hbf.com for more info.

PRICE | GRADE

\$87.00 | HBF Grade K

ACT REGISTERED CERTIFICATION


PRICE LIST

[Go to price list](#)

DOWNLOAD

[Fabric Product Documents](#)
[Maintenance](#)
[Sustainability Statement](#)
[Sustainability Certification Summary](#)
[Indoor Advantage™ Certificate](#)
[Sustainable Contents](#)

OTHER

[Other](#)
[Media Kit](#)
[News & Events](#)
[PFAS - FAQ](#)