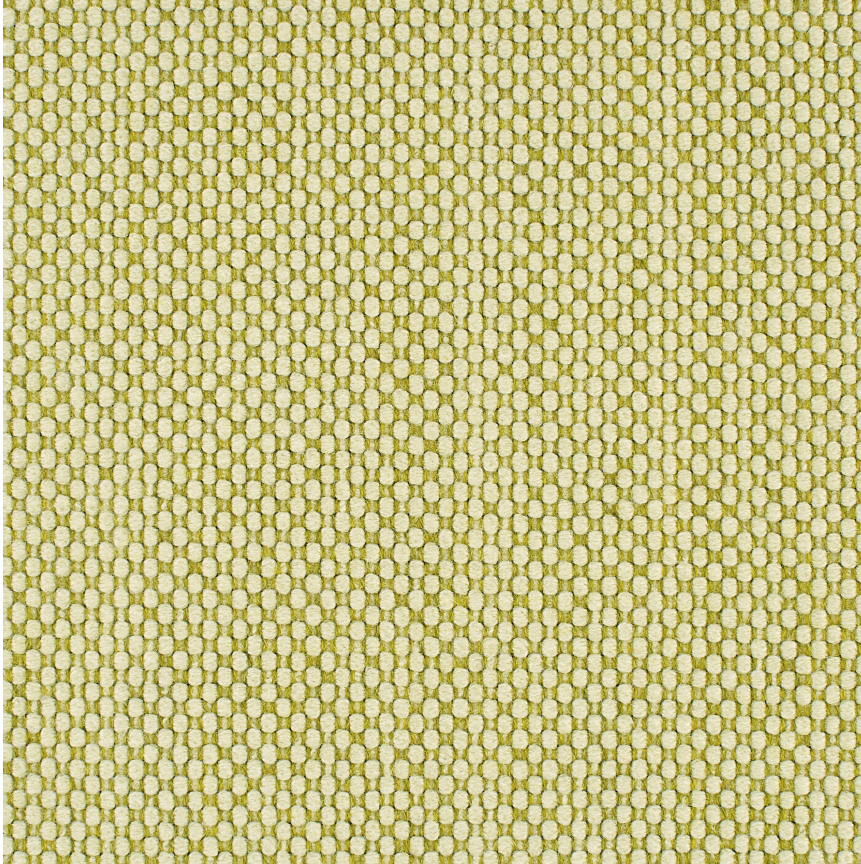


HBF TEXTILES



Double Stitch

986-63 Anis

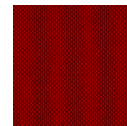
\$92.00/yard



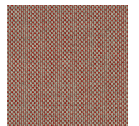
986-11 - Crème



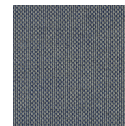
986-43 -
Tomate



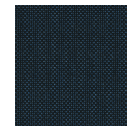
986-44 -
Rouge



986-48 -
Vermeil



986-58 - Bleu
Marine



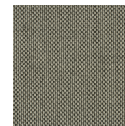
986-59 -
Cobalt



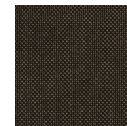
986-63 - Anis



986-67 - Vert



986-89 -
Anthracite








986-90 - Noir

DESIGNER	Elodie Blanchard
APPLICATION	Upholstery
CONTENT	97% wool, 3% nylon
WIDTH	48"
REPEAT	3/8" V x 3/8" H
WEIGHT	33.90 ounces per linear yard
FINISH	None
BACKING	Light acrylic
ABRASION	100,000 double rubs (W)
ORIGIN	United States
FLAME RESISTANCE	California TB 117-2013 Section 1 (Pass)
MAINTENANCE	S: Clean with water free dry cleaning solvent
SUSTAINABILITY	97% rapidly renewable content. Third party certified, Indoor Advantage™ Gold.

Based on disclosure from the supplier this product does not contain harmful chemicals listed on the Red List.

Free of intentionally added PFAS chemicals.

PRICE GRADE	\$92.00 HBF Grade L
----------------------	-----------------------

ACT REGISTERED CERTIFICATION	    
-------------------------------------	---

PRICE LIST	Go to price list
-------------------	----------------------------------

DOWNLOAD	Fabric Product Documents Maintenance Sustainability Statement Sustainability Certification Summary Indoor Advantage™ Certificate Sustainable Contents
-----------------	--

OTHER	Other Media Kit News & Events Presentation PFAS - FAQ
--------------	---
