

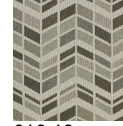
# HBF TEXTILES



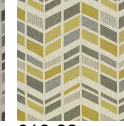
## High Rise

916-46 Inland Steel

\$59.00/yard



916-18 -  
Tribune



916-22 -  
Flatiron



916-43 -  
Wainwright



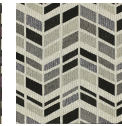
916-46 - Inland  
Steel



916-51 -  
Chrysler

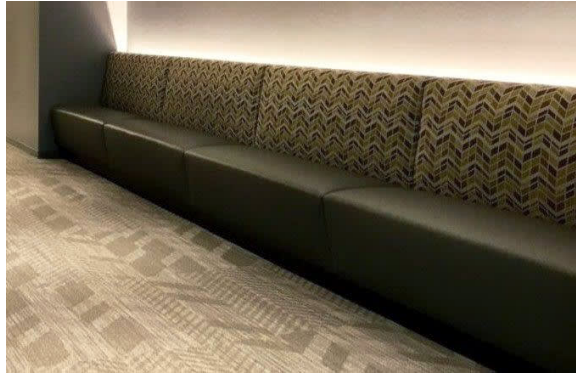







916-77 -  
Seagram



916-90 -  
Hancock

<b>DESIGNER</b>	Kendra Niederkorn
<b>APPLICATION</b>	Upholstery
<b>CONTENT</b>	59% cotton, 41% polyester
<b>WIDTH</b>	55"
<b>REPEAT</b>	9 1/2" V x 6 1/2" H (fabric shown railroaded)
<b>WEIGHT</b>	16.40 ounces per linear yard
<b>FINISH</b>	Non-PFAS water repellent
<b>BACKING</b>	Moisture barrier
<b>ABRASION</b>	60,000 double rubs (W)
<b>ORIGIN</b>	United States
<b>FLAME RESISTANCE</b>	NFPA 260 (UFAC Class 1), California TB 117-2013 Section 1 compliant
<b>MAINTENANCE</b>	W: Clean with water based shampoo or foam upholstery cleaner.



<b>SUSTAINABILITY</b>	<p>59% recycled content. 59% rapidly renewable content.</p> <p>Third party certified, Indoor Advantage™ Gold.</p> <p>Based on disclosure from the supplier this product does not contain harmful chemicals listed on the Red List.</p> <p>Free of intentionally added PFAS chemicals.</p>
<b>NOTES</b>	Large scale design.
<b>PRICE   GRADE</b>	\$59.00   HBF Grade G
<b>ACT REGISTERED CERTIFICATION</b>	    
<b>PRICE LIST</b>	<a href="#">Go to price list</a>
<b>DOWNLOAD</b>	<a href="#">Fabric Product Documents</a> <a href="#">Maintenance</a> <a href="#">Sustainability Statement</a> <a href="#">Sustainability Certification Summary</a> <a href="#">Indoor Advantage™ Certificate</a> <a href="#">Sustainable Contents</a>
<b>OTHER</b>	<a href="#">Other</a> <a href="#">PFAS - FAQ</a>