

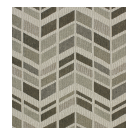
HBF TEXTILES



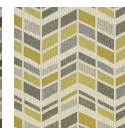
High Rise

916-51 Chrysler

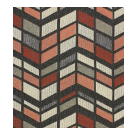
\$59.00/yard



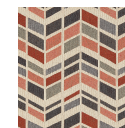
916-18 -
Tribune



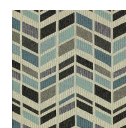
916-22 -
Flatiron



916-43 -
Wainwright



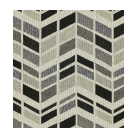
916-46 - Inland
Steel



916-51 -
Chrysler

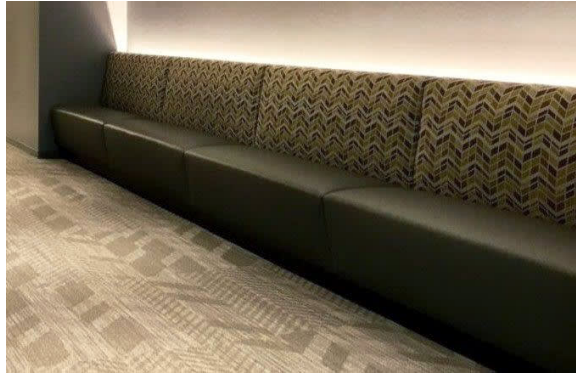







916-77 -
Seagram



916-90 -
Hancock

DESIGNER	Kendra Niederkorn
APPLICATION	Upholstery
CONTENT	59% cotton, 41% polyester
WIDTH	55"
REPEAT	9 1/2" V x 6 1/2" H (fabric shown railroaded)
WEIGHT	16.40 ounces per linear yard
FINISH	Non-PFAS water repellent
BACKING	Moisture barrier
ABRASION	60,000 double rubs (W)
ORIGIN	United States
FLAME RESISTANCE	NFPA 260 (UFAC Class 1), California TB 117-2013 Section 1 compliant
MAINTENANCE	W: Clean with water based shampoo or foam upholstery cleaner.



SUSTAINABILITY	<p>59% recycled content. 59% rapidly renewable content.</p> <p>Third party certified, Indoor Advantage™ Gold.</p> <p>Based on disclosure from the supplier this product does not contain harmful chemicals listed on the Red List.</p> <p>Free of intentionally added PFAS chemicals.</p>
NOTES	Large scale design.
PRICE GRADE	\$59.00 HBF Grade G
ACT REGISTERED CERTIFICATION	    
PRICE LIST	Go to price list
DOWNLOAD	Fabric Product Documents Maintenance Sustainability Statement Sustainability Certification Summary Indoor Advantage™ Certificate Sustainable Contents
OTHER	Other PFAS - FAQ