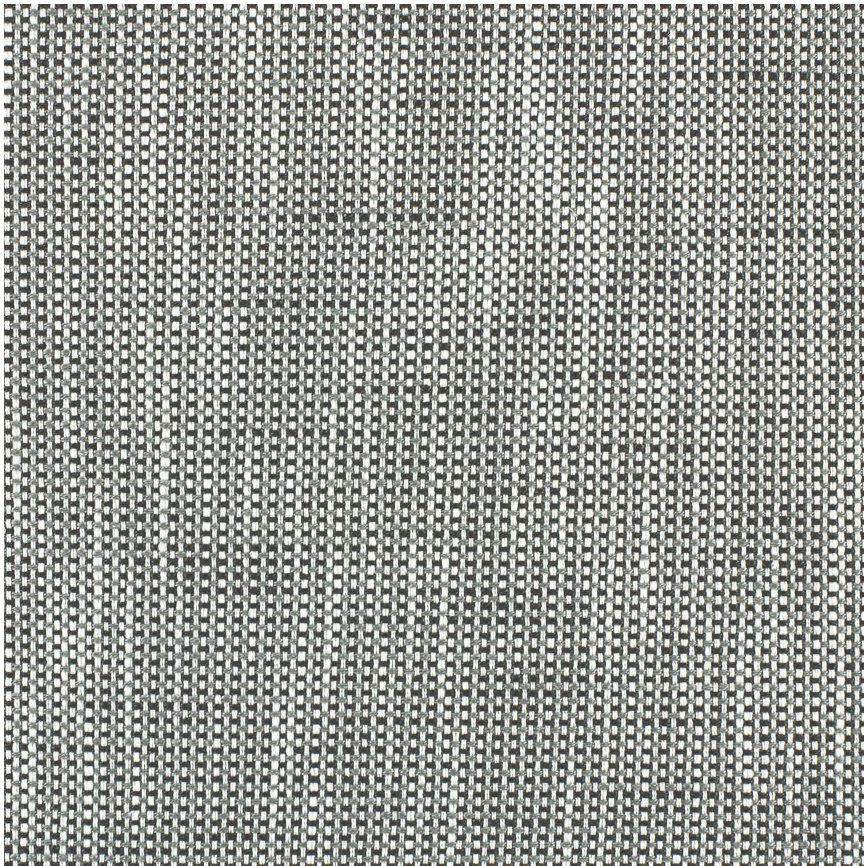


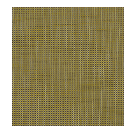
# HBF TEXTILES



## Checkmate

1043-80 Smoke Slate

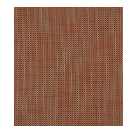
\$34.00/yard



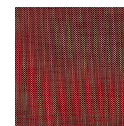
1043-22 -  
Golden Grey



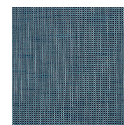
1043-25 -  
Tanned Umber



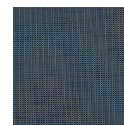
1043-43 - Coral  
Rust



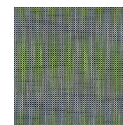
1043-44 - Red  
Brick



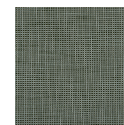
1043-56 - Aqua  
Sky



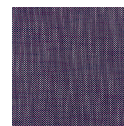
1043-58 -  
Royal Navy



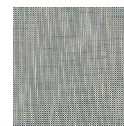
1043-63 - Blue  
Green



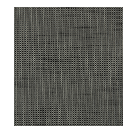
1043-66 -  
Forest Mint



1043-77 -  
Purple Indigo



1043-80 -  
Smoke Slate



1043-89 -  
Charcoal Black

<b>APPLICATION</b>	Upholstery, wrapped panel, systems panel
<b>CONTENT</b>	94% polyester, 4% post-industrial recycled polyester, 2% post-consumer recycled polyester
<b>WIDTH</b>	56"
<b>REPEAT</b>	None
<b>WEIGHT</b>	22.46 ounces per linear yard
<b>FINISH</b>	None
<b>BACKING</b>	Acrylic
<b>ABRASION</b>	63,000 double rubs (W)
<b>ORIGIN</b>	United States
<b>FLAME RESISTANCE</b>	California TB 117-2013 Section 1 (Pass), Class A rated ASTM E-84 (unadhered)
<b>MAINTENANCE</b>	<p>WS: Clean with upholstery shampoo or mild dry cleaning solvent.</p> <p>Bleach solutions up to 20% for cleaning difficult stains.</p>

**SUSTAINABILITY**

6% recycled content.

Third party certified, Indoor Advantage™ Gold.

Meets BIFMA e3 credit 7.4.4 for Targeted Chemical Elimination which includes PFAS restrictions.

Based on disclosure from the supplier this product does not contain harmful chemicals listed on the Red List.

Free of intentionally added PFAS chemicals.

---

**NOTES**

Bleach cleanable

---

**PRICE | GRADE**

\$34.00 | HBF Grade C

---

**ACT REGISTERED CERTIFICATION**

---

**PRICE LIST**

[Go to price list](#)

---

**DOWNLOAD**

[Fabric Product Documents](#)  
[Maintenance](#)  
[Sustainability Statement](#)  
[Sustainability Certification Summary](#)  
[Indoor Advantage™ Certificate](#)  
[Sustainable Contents](#)  
[Performance Textiles](#)  
[Cleaning & Disinfection](#)  
[Against COVID-19](#)

---

**OTHER**

[Other](#)  
[Digital Brochure](#)  
[Digital Binder Card](#)  
[PFAS - FAQ](#)