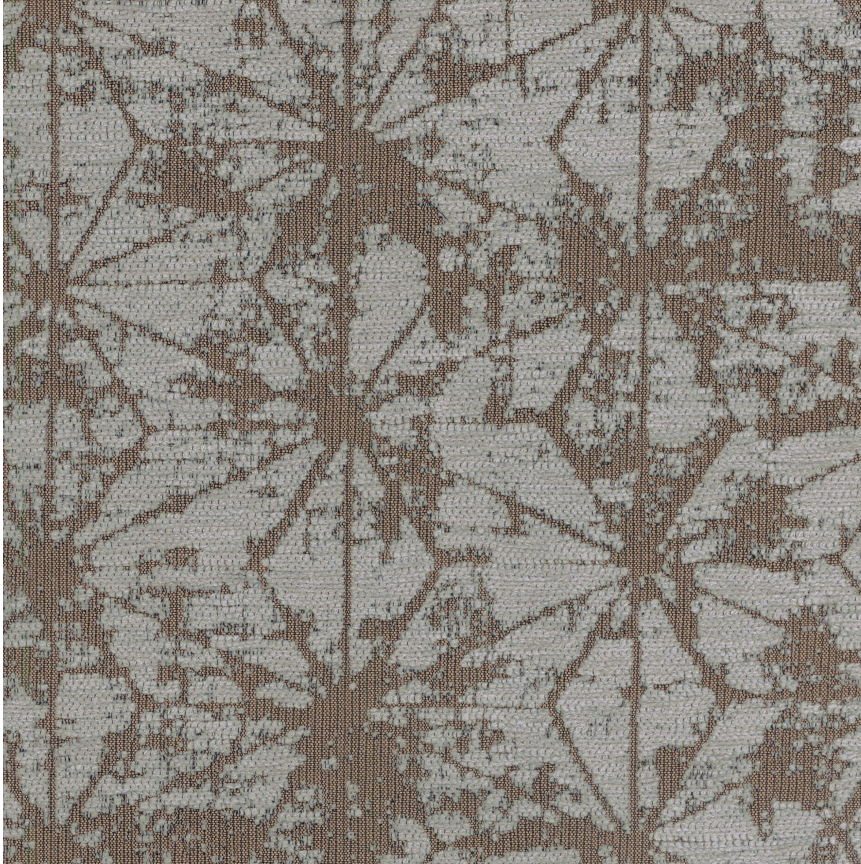


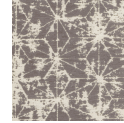
# HBF TEXTILES



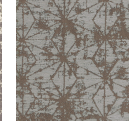
## Soft Angles 2.0

1051-37 Morning Frost

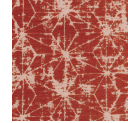
\$72.00/yard



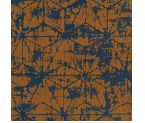
1051-18 -  
Lifting Fog



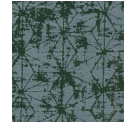
1051-37 -  
Morning Frost



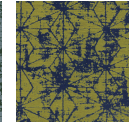
1051-46 -  
Tamarind Spice



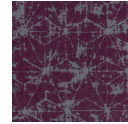
1051-30 -  
Smoky Copper



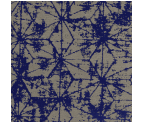
1051-67 -  
Honed Jade



1051-63 -  
Electric Green



1051-77 -  
Dusty Violet



1051-59 - Aged  
Indigo

<b>APPLICATION</b>	Upholstery, wrapped panel
<b>CONTENT</b>	52% polyester, 32% post-consumer recycled polyester, 16% nylon
<b>WIDTH</b>	57"
<b>REPEAT</b>	10 3/8" V x 9 5/8" H
<b>WEIGHT</b>	17.31 ounces per linear yard
<b>FINISH</b>	None
<b>BACKING</b>	Light acrylic
<b>ABRASION</b>	75,000 double rubs (W)
<b>ORIGIN</b>	United States
<b>FLAME RESISTANCE</b>	California TB 117-2013 Section 1 (Pass), Class A rated ASTM E-84 (unadhered), NFPA 260 (Pass)
<b>MAINTENANCE</b>	WS: Clean with upholstery shampoo or mild dry cleaning solvent.  Bleach solutions up to 10% for cleaning difficult stains.




---

<b>SUSTAINABILITY</b>	<p>32% recycled content.</p> <p>Third party certified, Indoor Advantage™ Gold.</p> <p>Meets BIFMA e3 credit 7.4.4 for Targeted Chemical Elimination which includes PFAS restrictions.</p> <p>Based on disclosure from the supplier this product does not contain harmful chemicals listed on the Red List.</p> <p>Free of intentionally added PFAS chemicals.</p>
-----------------------	---

---

<b>NOTES</b>	<p>Large scale repeat.</p> <p>Bleach cleanable. Meets BIFMA 8.1 2019 Healthcare Furniture Design Guidelines - Grade 5.</p>
--------------	--

---

<b>PRICE   GRADE</b>	\$72.00   HBF Grade H
----------------------	-----------------------

---

<b>ACT REGISTERED CERTIFICATION</b>	
-------------------------------------	--

---

<b>PRICE LIST</b>	<a href="#">Go to price list</a>
-------------------	----------------------------------

---

<b>DOWNLOAD</b>	<p><a href="#">Fabric Product Documents</a></p> <p><a href="#">Maintenance</a></p> <p><a href="#">Sustainability Statement</a></p> <p><a href="#">Sustainability Certification Summary</a></p> <p><a href="#">Indoor Advantage™ Certificate</a></p> <p><a href="#">Sustainable Contents</a></p> <p><a href="#">Performance Textiles</a></p> <p><a href="#">Cleaning &amp; Disinfection Against COVID-19</a></p>
-----------------	---

---

<b>OTHER</b>	<p><b>Other</b></p> <p><a href="#">Media Kit</a></p> <p><a href="#">News &amp; Events</a></p> <p><a href="#">Presentation</a></p> <p><a href="#">Postcard</a></p> <p><a href="#">Digital Binder Card</a></p> <p><a href="#">PFAS - FAQ</a></p> <p><a href="#">BIFMA 8.1 2019 Healthcare Furniture Design Guideline</a></p>
--------------	--