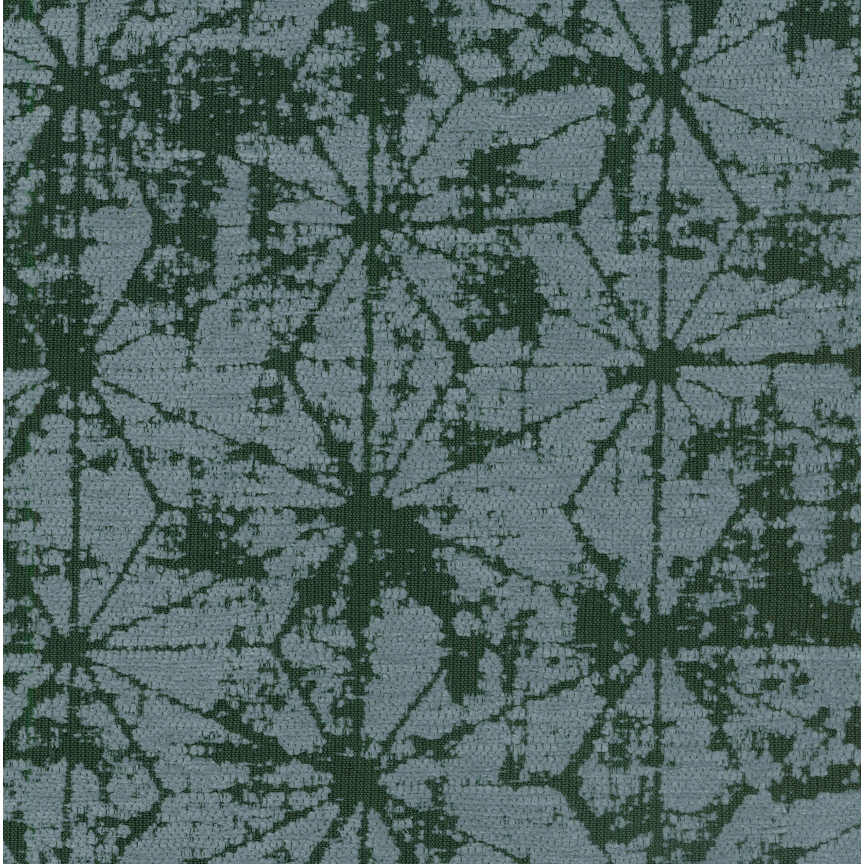


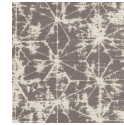
HBF TEXTILES



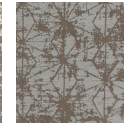
Soft Angles 2.0

1051-67 Honed Jade

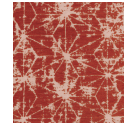
\$72.00/yard



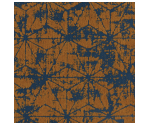
1051-18 -
Lifting Fog



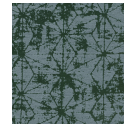
1051-37 -
Morning Frost



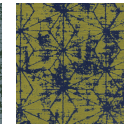
1051-46 -
Tamarind Spice



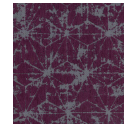
1051-30 -
Smoky Copper



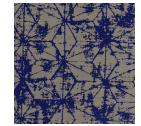
1051-67 -
Honed Jade



1051-63 -
Electric Green



1051-77 -
Dusty Violet



1051-59 - Aged
Indigo

APPLICATION	Upholstery, wrapped panel
CONTENT	52% polyester, 32% post-consumer recycled polyester, 16% nylon
WIDTH	57"
REPEAT	10 3/8" V x 9 5/8" H
WEIGHT	17.31 ounces per linear yard
FINISH	None
BACKING	Light acrylic
ABRASION	75,000 double rubs (W)
ORIGIN	United States
FLAME RESISTANCE	California TB 117-2013 Section 1 (Pass), Class A rated ASTM E-84 (unadhered), NFPA 260 (Pass)

MAINTENANCE	<p>WS: Clean with upholstery shampoo or mild dry cleaning solvent.</p> <p>Bleach solutions up to 10% for cleaning difficult stains.</p>
--------------------	---



SUSTAINABILITY

32% recycled content.

Third party certified, Indoor Advantage™ Gold.

Meets BIFMA e3 credit 7.4.4 for Targeted Chemical Elimination which includes PFAS restrictions.

Based on disclosure from the supplier this product does not contain harmful chemicals listed on the Red List.

Free of intentionally added PFAS chemicals.

NOTES

Large scale repeat.

Bleach cleanable. Meets BIFMA 8.1 2019 Healthcare Furniture Design Guidelines - Grade 5.

PRICE | GRADE

\$72.00 | HBF Grade H

ACT REGISTERED CERTIFICATION


PRICE LIST

[Go to price list](#)

DOWNLOAD

[Fabric Product Documents](#)
[Maintenance](#)
[Sustainability Statement](#)
[Sustainability Certification Summary](#)
[Indoor Advantage™ Certificate](#)
[Sustainable Contents](#)
[Performance Textiles](#)
[Cleaning & Disinfection](#)
[Against COVID-19](#)

OTHER

[Other](#)
[Media Kit](#)
[News & Events](#)
[Presentation](#)
[Postcard](#)
[Digital Binder Card](#)
[PFAS - FAQ](#)
[BIFMA 8.1 2019 Healthcare Furniture Design Guideline](#)