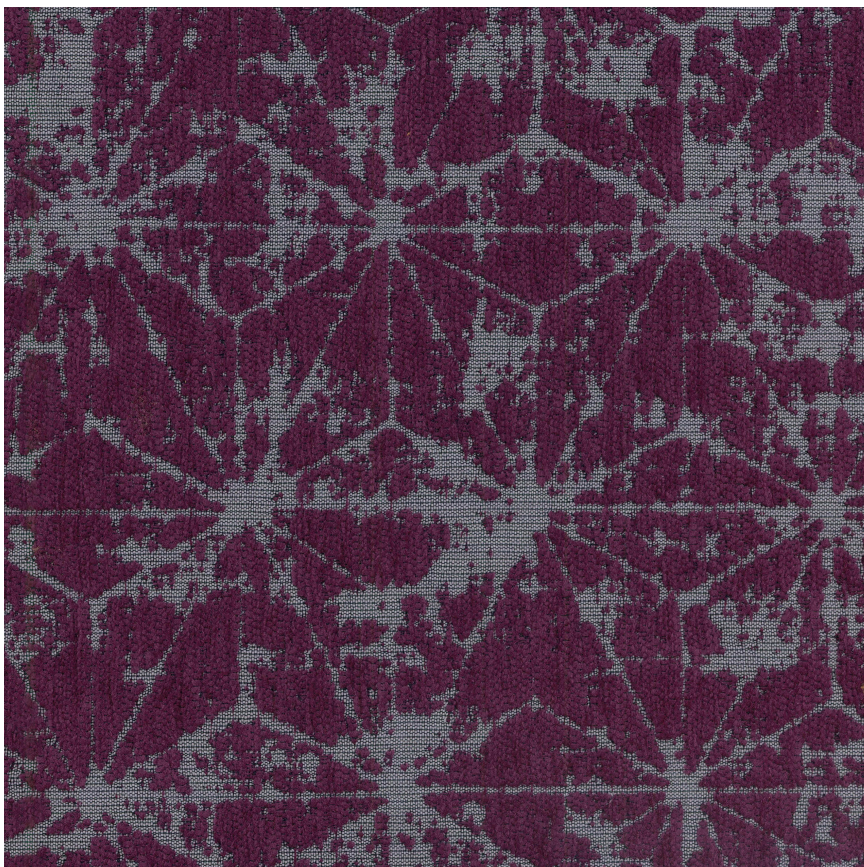


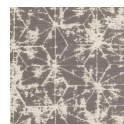
# HBF TEXTILES



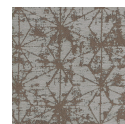
## Soft Angles 2.0

1051-77 Dusty Violet

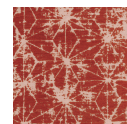
\$72.00/yard



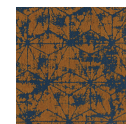
1051-18 -  
Lifting Fog



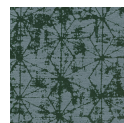
1051-37 -  
Morning Frost



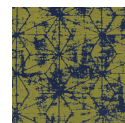
1051-46 -  
Tamarind Spice



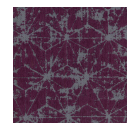
1051-30 -  
Smoky Copper



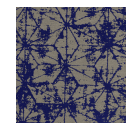
1051-67 -  
Honed Jade



1051-63 -  
Electric Green



1051-77 -  
Dusty Violet



1051-59 - Aged  
Indigo

<b>APPLICATION</b>	Upholstery, wrapped panel
<b>CONTENT</b>	52% polyester, 32% post-consumer recycled polyester, 16% nylon
<b>WIDTH</b>	57"
<b>REPEAT</b>	10 3/8" V x 9 5/8" H
<b>WEIGHT</b>	17.31 ounces per linear yard
<b>FINISH</b>	None
<b>BACKING</b>	Light acrylic
<b>ABRASION</b>	75,000 double rubs (W)
<b>ORIGIN</b>	United States
<b>FLAME RESISTANCE</b>	California TB 117-2013 Section 1 (Pass), Class A rated ASTM E-84 (unadhered), NFPA 260 (Pass)
<b>MAINTENANCE</b>	<p>WS: Clean with upholstery shampoo or mild dry cleaning solvent.</p> <p>Bleach solutions up to 10% for cleaning difficult stains.</p>




---

**SUSTAINABILITY**

32% recycled content.

Third party certified, Indoor Advantage™ Gold.

Meets BIFMA e3 credit 7.4.4 for Targeted Chemical Elimination which includes PFAS restrictions.

Based on disclosure from the supplier this product does not contain harmful chemicals listed on the Red List.

Free of intentionally added PFAS chemicals.

---

**NOTES**

Large scale repeat.

Bleach cleanable.

---

**PRICE | GRADE**

\$72.00 | HBF Grade H

---

**ACT REGISTERED CERTIFICATION**



---

**PRICE LIST**

[Go to price list](#)

---

**DOWNLOAD**

[Fabric Product Documents](#)  
[Maintenance](#)  
[Sustainability Statement](#)  
[Sustainability Certification Summary](#)  
[Indoor Advantage™ Certificate](#)  
[Sustainable Contents](#)  
[Performance Textiles](#)  
[Cleaning & Disinfection](#)  
[Against COVID-19](#)

---

**OTHER**

[Other](#)  
[Media Kit](#)  
[News & Events](#)  
[Presentation](#)  
[Postcard](#)  
[Digital Binder Card](#)  
[PFAS - FAQ](#)