

# HBF TEXTILES



## Cloverleaf

1055-67 Aqua/Green

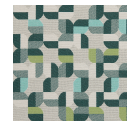
\$52.00/yard



1055-23 -  
Yellow/Gold



1055-85 -  
Orange/Navy



1055-67 -  
Aqua/Green



1055-40 -  
Pink/Rust



1055-55 -  
Turquoise/Blue



1055-60 -  
Pink/Olive



1055-44 -  
Red/Orange



1055-57 -  
Blue/Purple

<b>DESIGNER</b>	Mary Jo Miller
<b>APPLICATION</b>	Upholstery, wrapped panel
<b>CONTENT</b>	81% polyester, 19% post-consumer recycled polyester
<b>WIDTH</b>	56"
<b>REPEAT</b>	9 1/2" V x 9 1/2" H
<b>WEIGHT</b>	22.66 ounces per linear yard
<b>FINISH</b>	None
<b>BACKING</b>	Acrylic
<b>ABRASION</b>	63,000 double rubs (W)
<b>ORIGIN</b>	United States
<b>FLAME RESISTANCE</b>	California TB 117-2013 Section 1 (Pass), NFPA 260 (UFAC Class 1), ASTM E-84 (unadhered)

### MAINTENANCE

WS: Clean with upholstery shampoo or mild dry cleaning solvent.

Bleach solutions up to 10% for cleaning difficult stains.




---

**SUSTAINABILITY**

19% recycled content.

Third party certified, Indoor Advantage™ Gold.

Meets BIFMA e3 credit 7.4.4 for Targeted Chemical Elimination which includes PFAS restrictions.

Based on disclosure from the supplier this product does not contain harmful chemicals listed on the Red List.

Free of intentionally added PFAS chemicals.

---

**NOTES**

Large scale repeat.

Bleach cleanable. Meets BIFMA 8.1 2019 Healthcare Furniture Design Guidelines - Grade 5.

For a coated fabric variant of this pattern, please refer to Pattern 1097, Cloverleaf Print.

---

**PRICE | GRADE**

\$52.00 | HBF Grade F

---

**ACT REGISTERED CERTIFICATION**



---

**PRICE LIST**

[Go to price list](#)

---

**DOWNLOAD**

[Fabric Product Documents](#)  
[Maintenance](#)  
[Sustainability Statement](#)  
[Sustainability Certification Summary](#)  
[Indoor Advantage™ Certificate](#)  
[Sustainable Contents](#)  
[Performance Textiles](#)  
[Cleaning & Disinfection](#)  
[Against COVID-19](#)

---

**OTHER**

**Other**  
[Media Kit](#)  
[News & Events](#)  
[Presentation](#)  
[Postcard](#)  
[Digital Binder Card](#)  
[PFAS - FAQ](#)  
[BIFMA 8.1 2019 Healthcare Furniture Design Guideline](#)