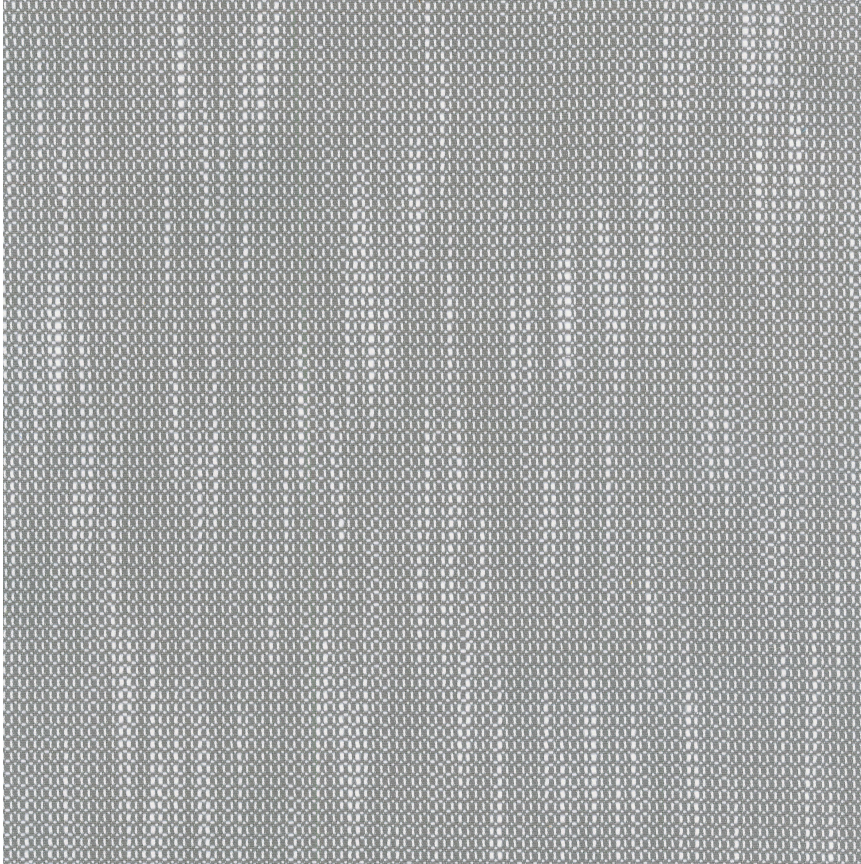


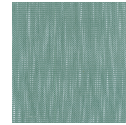
# HBF TEXTILES



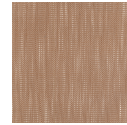
## Rush

1063-84 Smoke

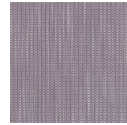
\$27.00/yard



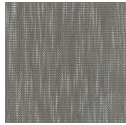
1063-67 - Forest Green



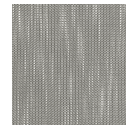
1063-35 - Cinnamon Sugar



1063-77 - Petals



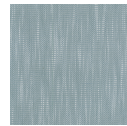
1063-90 - Obsidian



1063-18 - Seal



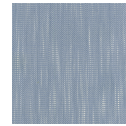
1063-25 - Browned Butter



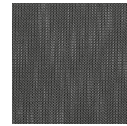
1063-54 - Rain Drop



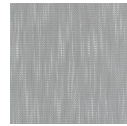
1063-62 - Dried Herb



1063-57 - Blue Sky



1063-99 - Soot



1063-84 - Smoke

<b>APPLICATION</b>	Upholstery, wrapped panel
<b>CONTENT</b>	100% polyester
<b>WIDTH</b>	54"
<b>REPEAT</b>	3/16" V x 1/8" H
<b>WEIGHT</b>	22.53 ounces per linear yard
<b>FINISH</b>	None
<b>BACKING</b>	Acrylic
<b>ABRASION</b>	51,000 double rubs (W)
<b>ORIGIN</b>	United States
<b>FLAME RESISTANCE</b>	California TB 117-2013 Section 1 (Pass), Class A rated ASTM E-84 (unadhered)
<b>MAINTENANCE</b>	<p>WS: Clean with upholstery shampoo or mild dry cleaning solvent.</p> <p>Bleach solutions up to 10% for cleaning difficult stains.</p>



<b>SUSTAINABILITY</b>	<p>Third party certified, SCS Indoor Advantage™ Gold.</p> <p>Meets BIFMA e3 credit 7.4.4 for Targeted Chemical Elimination which includes PFAS restrictions.</p> <p>Based on disclosure from the supplier this product does not contain harmful chemicals listed on the Red List.</p> <p>Free of intentionally added PFAS chemicals.</p>
<b>NOTES</b>	Bleach cleanable.
<b>PRICE   GRADE</b>	\$27.00   HBF Grade B
<b>ACT REGISTERED CERTIFICATION</b>	
<b>PRICE LIST</b>	<a href="#">Go to price list</a>
<b>DOWNLOAD</b>	<p><b>Fabric Product Documents</b></p> <ul style="list-style-type: none"> <li>Maintenance</li> <li>Sustainability Statement</li> <li>Sustainability Certification Summary</li> <li>Indoor Advantage™ Certificate</li> <li>Sustainable Contents</li> <li>Performance Textiles</li> <li>Cleaning &amp; Disinfection Against COVID-19</li> </ul>
<b>OTHER</b>	<p><b>Other</b></p> <ul style="list-style-type: none"> <li>Media Kit</li> <li>News &amp; Events</li> <li>Postcard</li> <li>Digital Binder Card</li> <li>CLEAN IMPACT TEXTILES™</li> <li>FAQ</li> <li>PFAS - FAQ</li> </ul>