

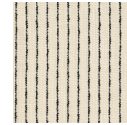
# HBF TEXTILES



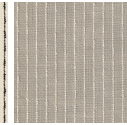
## Laugh Lines

1069-23 Citrine

\$50.00/yard



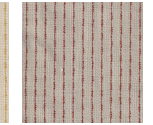
1069-90 - Ink



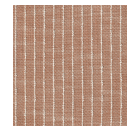
1069-20 - Mica



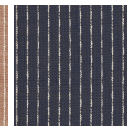
1069-23 - Citrine



1069-18 - Sonar



1069-46 - Clay



1069-59 - Blue Agate



1069-69 - Fauna



1069-85 - Sterling

<b>DESIGNER</b>	Erin Ruby
<b>APPLICATION</b>	Upholstery
<b>CONTENT</b>	95% polyester ultraviolet, 5% olefin ultraviolet
<b>WIDTH</b>	56 1/2"
<b>REPEAT</b>	3 7/8" V x 1 1/16" H
<b>WEIGHT</b>	22.10 ounces per linear yard
<b>FINISH</b>	None
<b>BACKING</b>	Acrylic
<b>ABRASION</b>	63,000 double rubs (W)
<b>ORIGIN</b>	United States
<b>FLAME RESISTANCE</b>	California TB 117-2013 Section 1 (Pass), NFPA 260 (UFAC Class 1)

<b>MAINTENANCE</b>	<p>WS: Clean with upholstery shampoo or mild dry cleaning solvent.</p> <p>Bleach solutions up to 10% for cleaning difficult stains.</p>
--------------------	---



NYC Showroom - Wellness Hallway features Laugh Lines

---

**SUSTAINABILITY**

Third party certified, Indoor Advantage™ Gold.

Meets BIFMA e3 credit 7.4.4 for Targeted Chemical Elimination which includes PFAS restrictions.

Based on disclosure from the supplier this product does not contain harmful chemicals listed on the Red List.

Free of intentionally added PFAS chemicals.

---

**NOTES**

Approved for outdoor use.

Bleach cleanable. Meets BIFMA 8.1 2019 Healthcare Furniture Design Guidelines - Grade 5.

---

**PRICE | GRADE**

\$50.00 | HBF Grade F

---

**ACT REGISTERED CERTIFICATION**




---

**PRICE LIST**

[Go to price list](#)

---

**DOWNLOAD**

- [Fabric Product Documents](#)
- [Maintenance](#)
- [Sustainability Statement](#)
- [Sustainability Certification Summary](#)
- [Indoor Advantage™ Certificate](#)
- [Sustainable Contents](#)
- [Performance Textiles](#)
- [Cleaning & Disinfection](#)
- [Against COVID-19](#)

---

**OTHER**

- Other**
- [Media Kit](#)
- [Presentation](#)
- [News & Events](#)
- [Digital Binder Card](#)
- [PFAS - FAQ](#)
- [BIFMA 8.1 2019 Healthcare Furniture Design Guideline](#)