

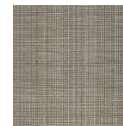
# HBF TEXTILES



## Seeds of Colour

1091-22 Ginger

\$65.00/yard



1091-83 - Birch



1091-89 -  
Norwood



1091-22 -  
Ginger



1091-30 - Hazel



1091-25 -  
Sunflower



1091-46 -  
Primrose



1091-44 -  
Dahlia



1091-75 -  
Heather



1091-40 -  
Jasmine



1091-63 -  
Linden



1091-67 - Fern



1091-55 -  
Cornflower



1091-59 -  
Periwinkle

### DESIGNER

Christiane Müller

### APPLICATION

Upholstery, wrapped panel

### CONTENT

65% post-consumer recycled polyester, 35% polyester

### WIDTH

54"

### REPEAT

12 1/2" V x 13 1/2" H

### WEIGHT

16.26 ounces per linear yard

### FINISH

Non-PFAS water repellent

### BACKING

Acrylic

### ABRASION

100,000 double rubs (W)

### ORIGIN

United States

### FLAME RESISTANCE

California TB 117-2013  
Section 1 (Pass), ASTM-E84  
Unadhered

### MAINTENANCE

WS: Clean with upholstery  
shampoo or mild dry cleaning

solvent.

Bleach cleanable. Bleach solutions up to 25% for cleaning difficult stains.












---

**SUSTAINABILITY**

65% post-consumer recycled polyester.

Third party certified, Indoor Advantage™ Gold.

Meets BIFMA e3 credit 7.4.4 for Targeted Chemical Elimination which includes PFAS restrictions.

Based on disclosure from the supplier this product does not contain harmful chemicals listed on the Red List.

Free of intentionally added PFAS chemicals.

---

**NOTES**

Bleach cleanable. Meets BIFMA 8.1 2019 Healthcare Furniture Design Guidelines - Grade 5.

Approved for outdoor use.

---

**PRICE | GRADE**

\$65.00 | HBF Grade H

---

**ACT REGISTERED CERTIFICATION**



---

**PRICE LIST**

[Go to price list](#)

---

**DOWNLOAD**

[Fabric Product Documents](#)  
[Maintenance](#)  
[Sustainability Statement](#)  
[Sustainability Certification Summary](#)  
[Indoor Advantage™ Certificate](#)  
[Sustainable Contents](#)  
[Performance Textiles](#)  
[Cleaning & Disinfection Against COVID-19](#)

---

**OTHER**

**Other**  
[PFAS - FAQ](#)  
[News & Events](#)  
[Video](#)  
[Digital Binder Card](#)  
[BIFMA 8.1 2019 Healthcare Furniture Design Guideline](#)